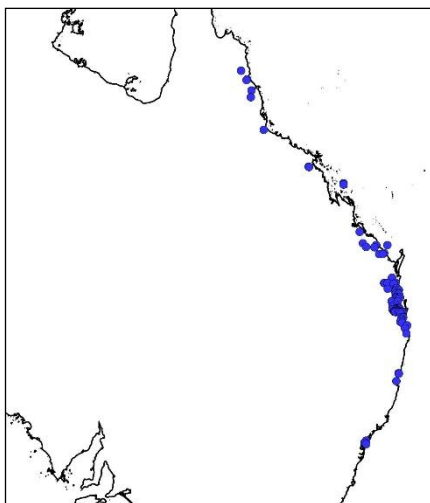


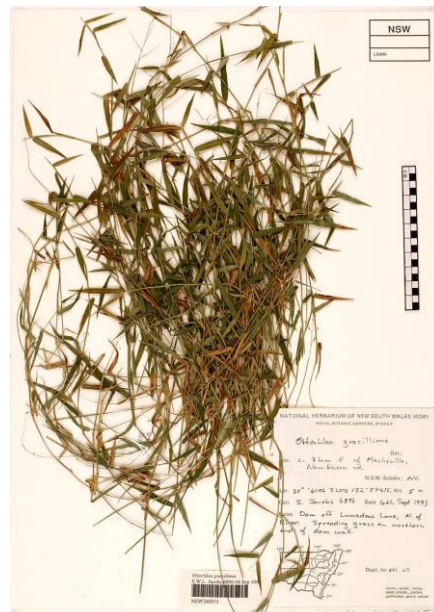
## Poaceae

### *Ottochloa gracillima*

Slender Forest Grass / Graceful Grass



Ann Moran  
Field Botanist



## ETYMOLOGY

History of words

(ot-o-CLO-a) named for Dr Otto Stapf, 1857-1933 distinguished agrostologist; The latin species gracillima (gray-Cell-EEM-ah); = for very delicate. Of slender habit

## LIFEFORM

Grass 5-60cm

## ORIGIN

Brisbane Q Erina Ck, Wyong NSW Gosford is southern geographical limit

## HABITAT

Open forest Coastal lowlands east of the Great Dividing Range

## TOLERANCES

Full sun to shade. Moist ground

## LEAVES

Blades, 1-10 cm x 1.5-7 mm, linear to lanceolate, glabrous on surface or hispid, with tubercle-based hairs. Leaf-sheaths outer margin hairy. Ligule an eciliate 0.1-0.3 mm membrane

## FLOWERS

Racemes 2-4, unilateral, 0.5-2 cm long. central inflorescence axis 1-9 cm. Rhachis angular; Spikelet packing abaxial.

**Flowering Times:** Jan, Feb, March, April, May

## FRUIT

Glumes 1-1.2 mm, apex acute, elliptic ovate, distinctly nerved; 66% of length of spikelet, membranous, 3-5-nerved;

## ROOTS

Roots at lower nodes, often forming green mats (Wheeler et al 1990)

## STEM

Slender perennial grass, with scrambling or decumbent stems.

## ETHNOBOTANY

Interrelations between people and plants

Native lawn particularly for shady areas. Mowing increases density.

## BIRD

Pale Headed Rosella *Platycercus eximius*

## BUTTERFLY

*Toxidia rietmanni* (white-brand grass-skipper)

## COMMENTS

A sprawling, weak broad at base grass occurring sporadically in tropical and subtropical woodlands; Similar to *Panicum pygmaea* the 2 glumes longer;